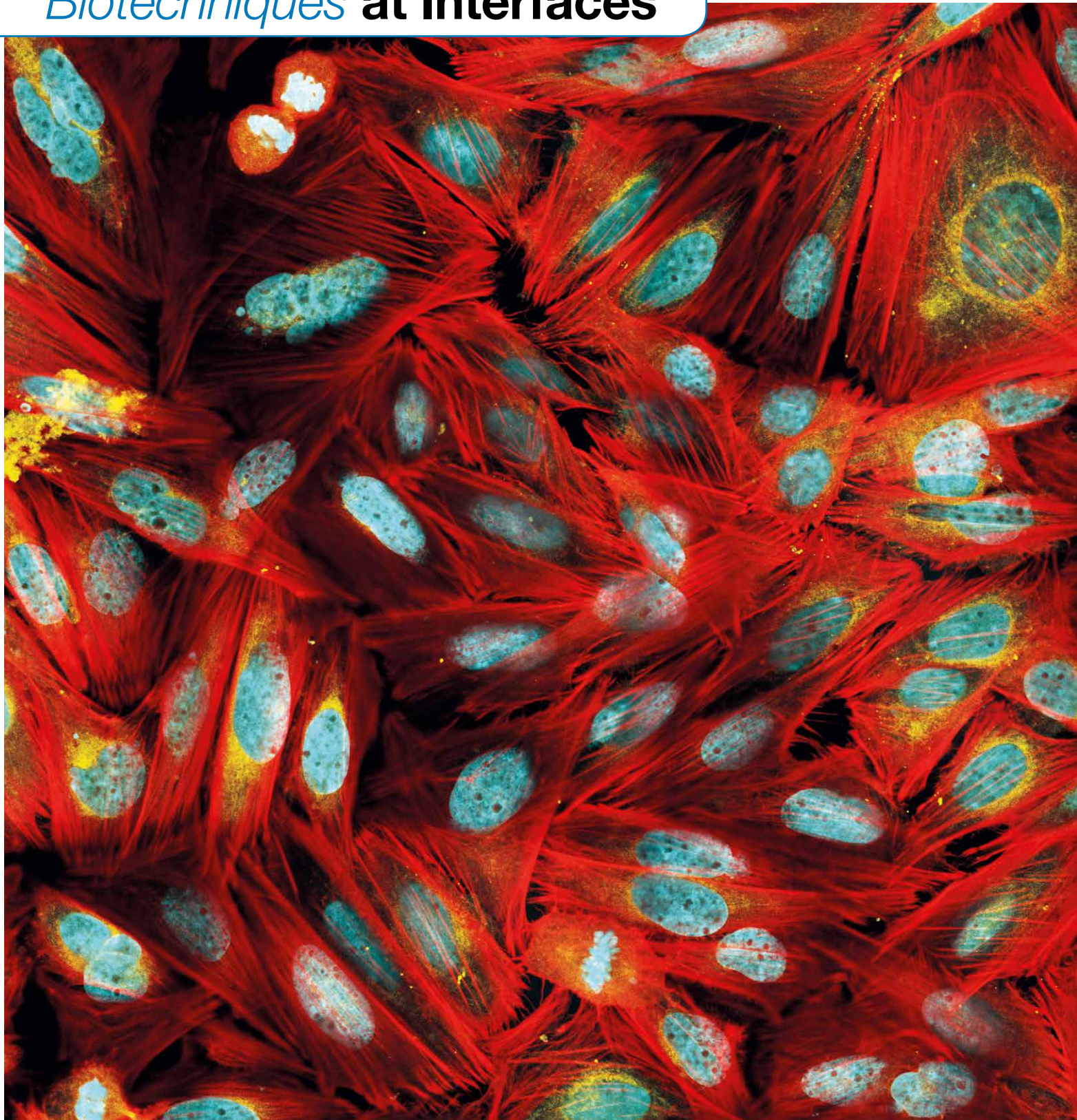
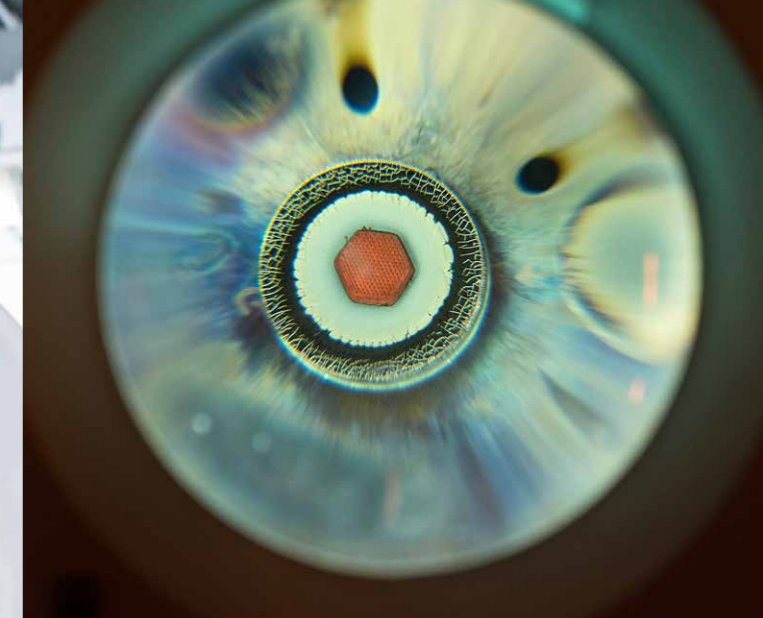


Biotechniques **at Interfaces**



02

Partner for application-oriented research



The Institut für Bioprozess- und Analysenmesstechnik (iba) e. V. was founded in 1992 as an application-oriented research institute. Our versatile research focuses on technical systems for the life sciences.

Our research aims to develop biotechniques at interfaces for disease modeling and personalized medicine. In combining biology, biotechnology and measurement techniques, we model native processes on a laboratory scale in order to contribute to a better understanding of processes on technical and medical material surfaces. The research can enhance the knowledge about diseases, their origins and therapies.

WIDE SPREADED RESEARCH TASKS

With state-of-the-art technology and a team of experienced scientists from various disciplines, we daily face new research tasks and challenges.

The research focuses on:

- › Development of microsystems for automated cell cultivation and cell manipulation
- › Development of miniaturized scaffolds for three-dimensional cell cultivation
- › Production of material surfaces with biomimetic/bioactive properties
- › Causal evaluation of material surface effects on cell growth, cell differentiation and biofilm formation
- › Development of electrical measurement technology for cell and tissue analysis



Durch die GoZee-App wird Ihre Broschüre lebendig

GoZee: Wie man in 30 Sekunden loslegen kann

1. Geben Sie im App Store oder in Google Play „GoZee“ in das Suchfeld ein und laden Sie die App auf Ihr Smartphone oder Tablet herunter.
2. Öffnen Sie die App und verwenden Sie sie auf Seiten mit dem GoZee-Symbol.



Foto-galerie Cinema-gramm Web-Symbol GPS-Standort



04

Science meets industry



In order to develop solutions to face future challenges, it is crucial to link scientific research at an international level with practical requirements based in industry. The iba acts as a link between basic and market-oriented research on products and processes. Our research results allow users and manufacturers of clinical products and materials to gain valuable insight into new therapeutic strategies and prophylactic pathway approaches, as well as optimize technical processes in biotechnology and environmental monitoring.

COMPETENCE FOR FUTURE-ORIENTED SOLUTIONS

Our 60 employees reflect the interdisciplinary research profile of our institute, which is subdivided into the departments of biomaterials, bioprocess engineering and analytical measurement technology as well as an international junior scientist group. Our scientists combine qualifications in the biological-biochemical field, chemistry, physics, materials science, biotechnology, engineering and electronics.



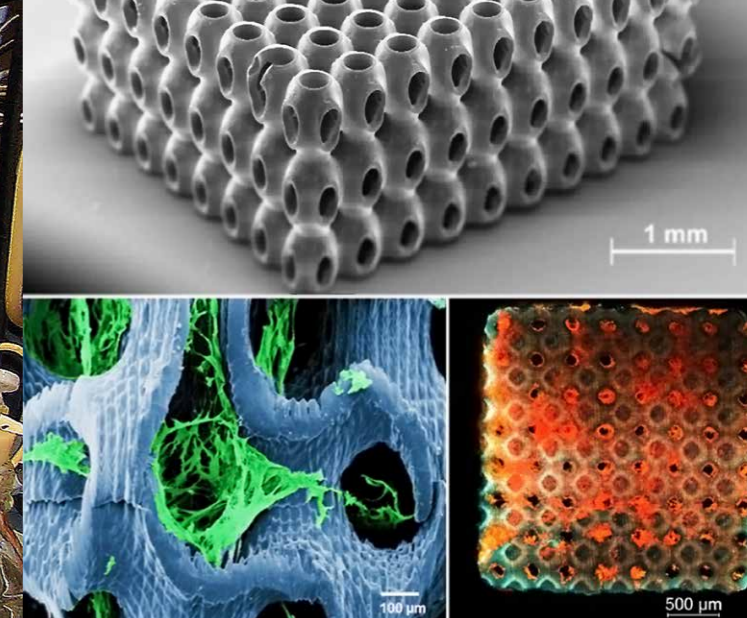
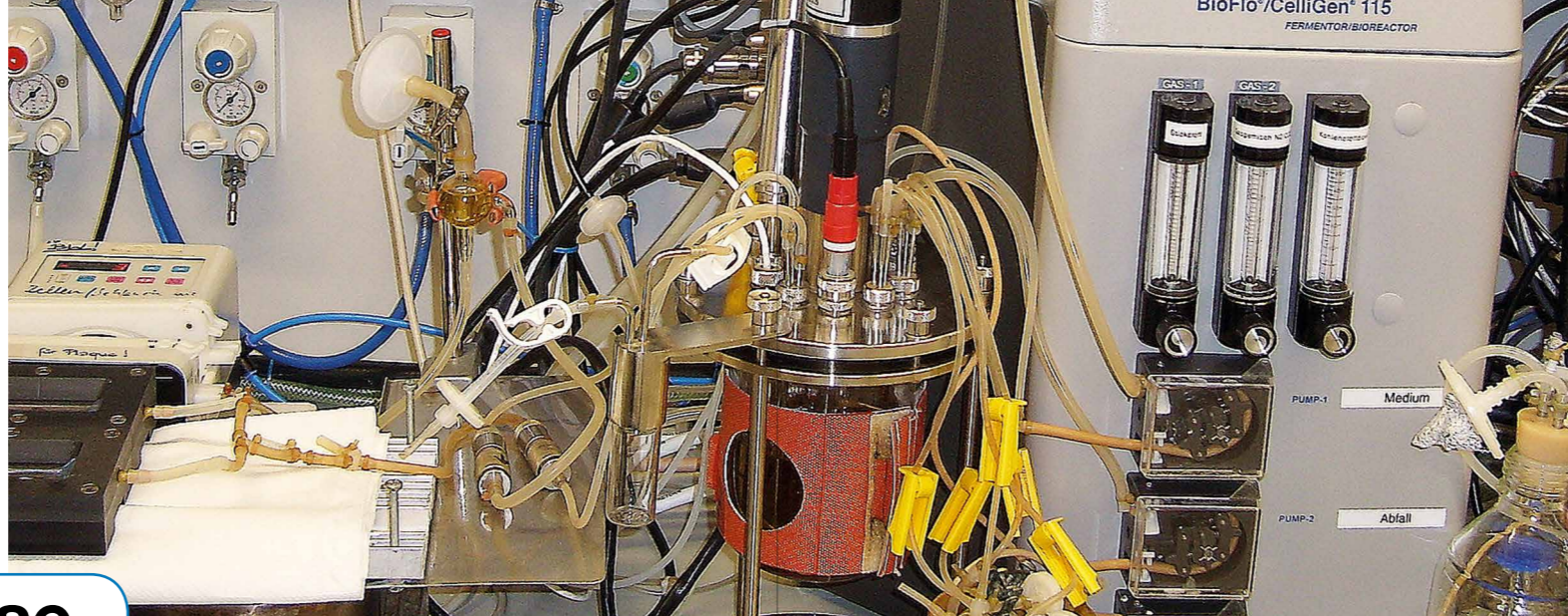
Bildsegmentierung für 2D- und 3D-Datensätze

ZEISS ZEN Intellesis



06

Technology on the pulse



In addition to a large team of experts in different research areas, iba is also equipped with state-of-the-art technologies and technical research devices.

The highlights of the technologies are the two-photon technology with polymerization (2PP), laser scanning microscopy (2PLSM) and cell manipulation (2PM), droplet-based miniaturized cell culture (pbb®: pipebased bioreactor) and bioimpedance analysis.

PARTNER IN EDUCATION

In addition to application research, our Institute also fulfills an educational mission. Since 2013, the iba is an affiliated institute of the Technical University Ilmenau. As part of the master's program "Miniaturized Biotechnology", which is carried out in cooperation with the Ernst-Abbe University of Applied Sciences Jena and the Technical University of Ilmenau, the Institute provides support and guidance for the scientific qualification of numerous bachelor and master students from Germany, Europe and the United States. In addition, there is a widespread cooperation network with national and international partners from research and industry.



FLÜSSIGKEITSANALYSE
in *Echtzeit* und im *Durchfluss*

Hochfrequenz Impedanzspektroskopie

Kompakte Sensoren für innovative Qualitätskontrolle

www.ilmsens.com
+49 3677 76 130 30
info@ilmsens.com

M&N

Patentanwälte • Partnerschaft mbB
Kleine Fleischergasse 2 • 04109 Leipzig

TEL +49 341 30 868 300
WEB www.maikowski-ninnemann.com

BERLIN • MÜNCHEN • LEIPZIG • FRANKFURT/MAIN

Preise, Stipendien, eisekosten, Tagu Doktorandenförd Postdoktoranden pendium, Druckko Anschubfinanzie Verbundprojekt, Tagungsorganisa Studie, Reiseskos ommschule, Exi Essay-Wettbewerb Dissertation spr Studienförderun ation, Auslandsf osten, bilateral

www.elfi.info

In unserer Datenbank finden Sie die Finanzierung für Ihr Forschungsprojekt!

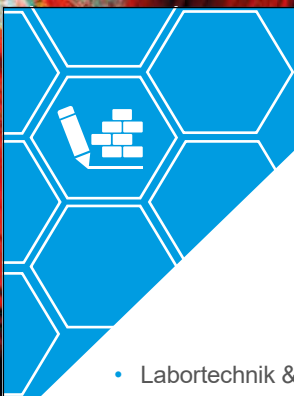
ELFI Gesellschaft für Forschungsdienstleistungen mbH

Postfach 25 02 07
D-44740 Bochum
Tel. +49 (0)234 32-22940

Biotechniques at Interfaces

INSTITUT FÜR BIOPROZESS- UND ANALYSENMESSTECHNIK E.V.

Rosenhof
37308 Heilbad Heiligenstadt
Tel.: +49 3606 671-0
Fax: +49 3606 671-200
iba@iba-heiligenstadt.de
www.iba-heiligenstadt.de



A MEMBER OF **EPC**^{GROUP}
hi BAUPROJEKT
GmbH

GENERALPLANUNG LABOR & REINRAUM

- Labortechnik & wissenschaftliche Geräte
- Reinräume für Pharma, Industrie & Forschung
- Fachtechnische Beratung
- Konzepterstellung



Kahlaische Straße 4
07745 Jena
+49 3641 5220 - 0
mail@hi-bauprojekt.de
www.hi-bauprojekt.de